



**Prague and urban  
development – approaches  
to the city & historical  
development**

# Approaches to the city

- Since 19th century – Marx, Weber, Simmel
- Chicago school (R. E. Park) - concentric model of a city
- Critical geography – H. Lefebvre, D. Harvey, M. Castells
- Neoweberianism – R. E. Pahl
- Context of socialism/post-socialism
- Current topics of social geography/urban sociology

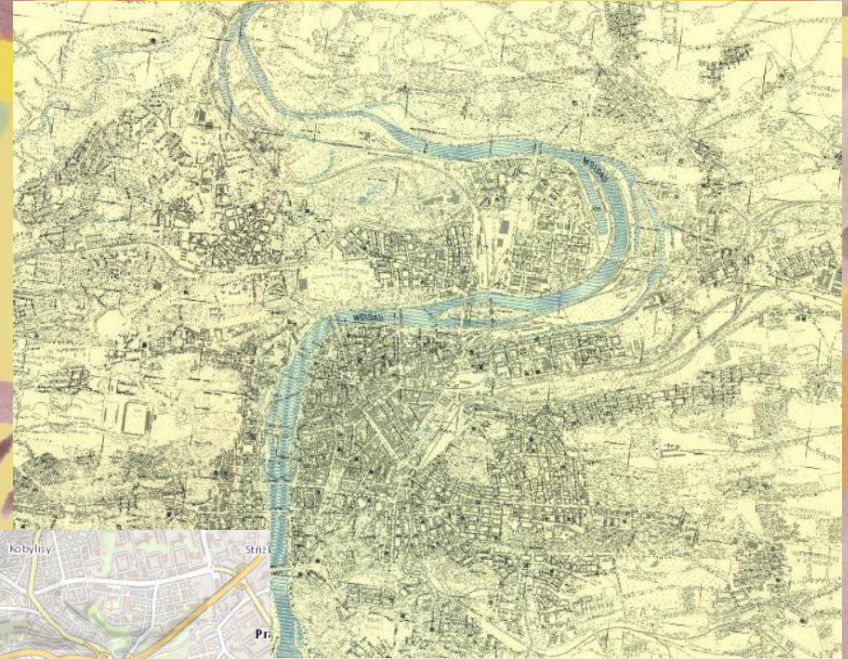
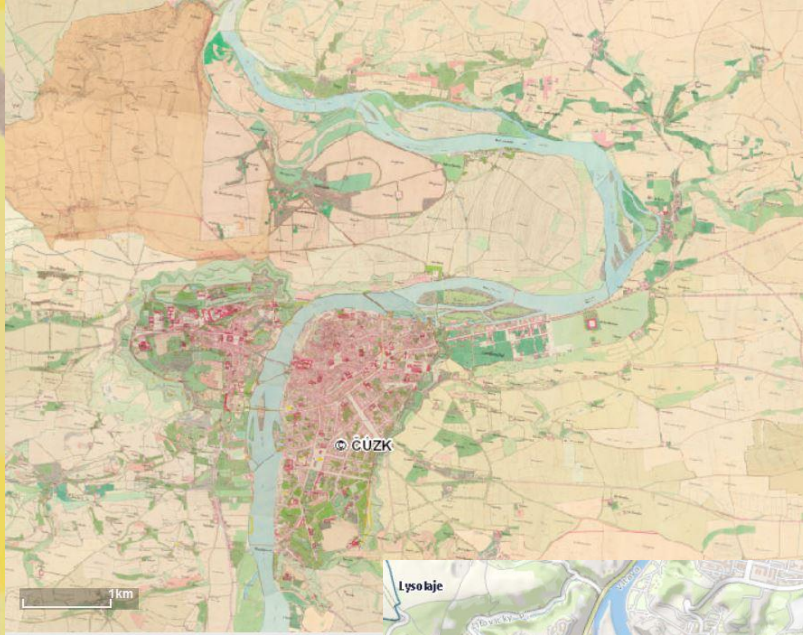


# Urbanization

- Societal system change
- 80 % of population in cities
- Perspective clashes
  - Linear x cyclical
  - Natural x social
  - Spontaneous x controllable



# The case of Prague





# The case of Prague

- Historical core (UNESCO)
- Inner/outer center
- Socialistic housing development (60's – 80's)
- Former villages
- Suburbs & surrounding villages

# The case of Prague





# The case of Prague



# The case of Prague

- Local specifics
  - Karlín, Žižkov, Holešovice
- Brownfields
- Gentrification
- Centre – outflow of residents; societal change