

Enforcing water protection and compliance with the law: Environmental Inspection in CZ

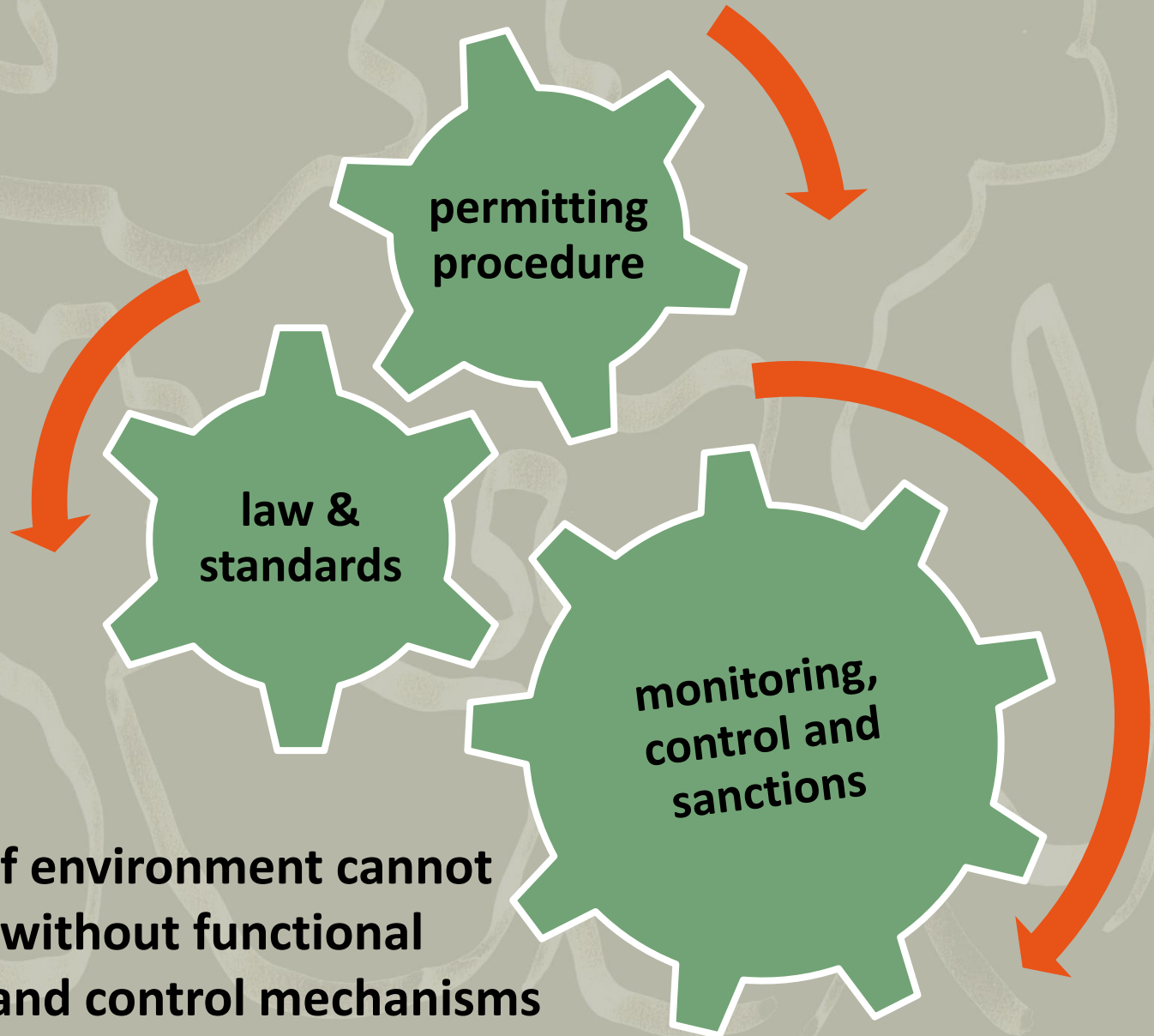
Coalition to Save the Rivers of BiH

Martin Skalský/ Arnika
Bosnia and Herzegovina / June 2018



TRANSITION
Ministry of Foreign Affairs of the Czech Republic

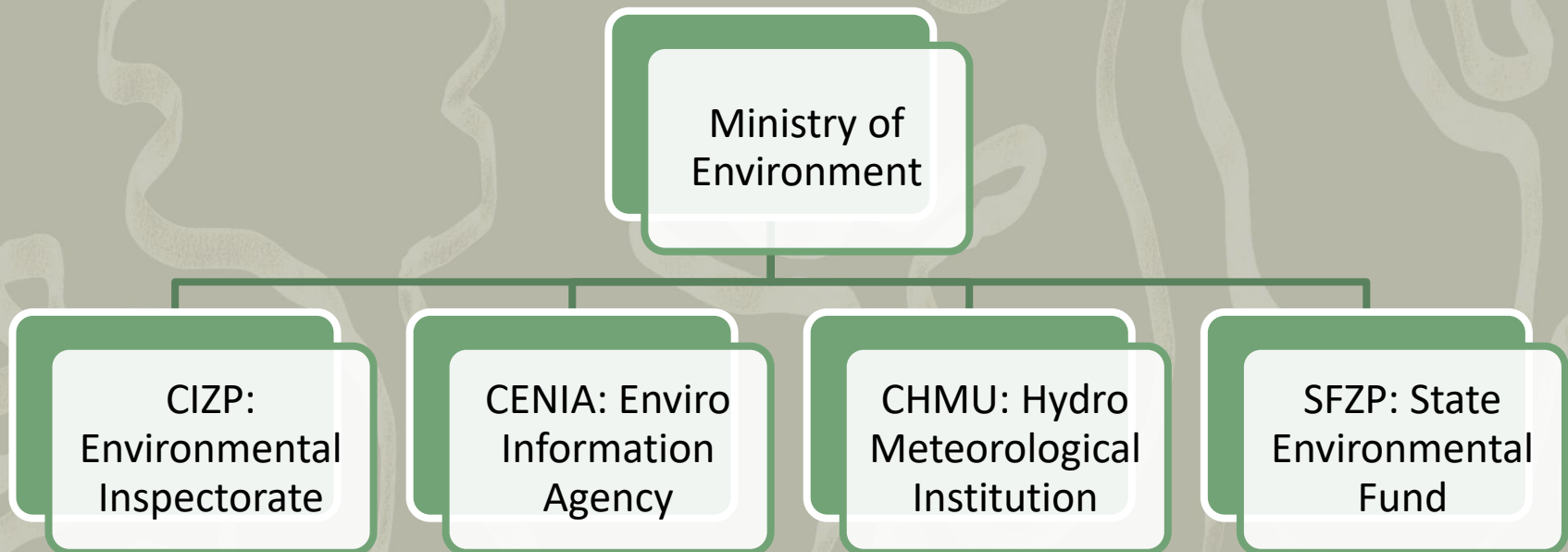
Protection of the environment



Protection of environment cannot be effective without functional monitoring and control mechanisms

CZ Environmental Inspectorate

- Established in 1991 by „Law on environmental inspection and protection of the forest“
- Subordinate to the Ministry of Environment
- Director appointed by the minister



CZ Inspectorate: Departments



Inspections

- ① Annual plan of **regular** inspections
- ② Inspections **on request** (complaints of the citizens, info in the media, etc.)
- ③ Monitoring of industrial **accidents**

Competence of the inspectors

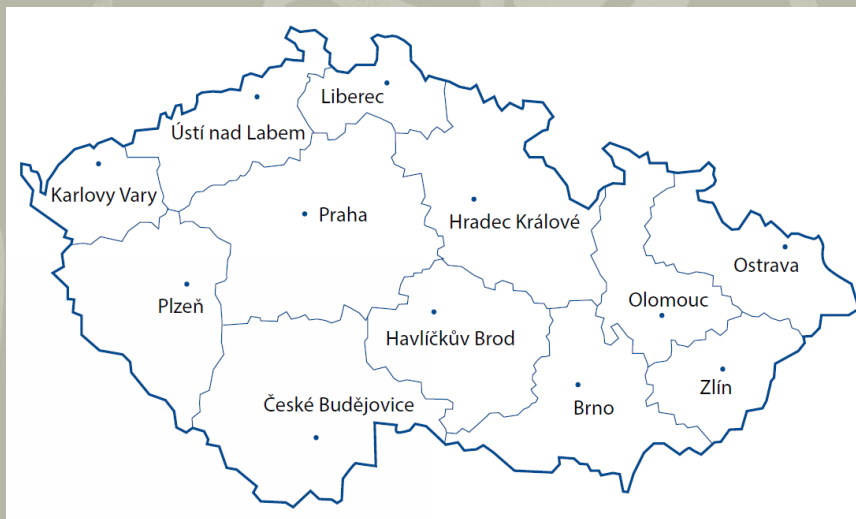
- Enter the sites and facilities (with or without prior notification)
- Check the documents, make measurements
- Restrict or stop operation of the facility
- Put the fines or take decision on remedies

Responsibilities

| | CZ Environmental Inspectorate Competencies | air | water | waste | natur | e forest |
|-------------|---|-----|-------|-------|-------|----------|
| Supervision | Controls, reviews, investigations | X | X | X | X | X |
| Sanctions | Fines to private persons | X | X | X | X | X |
| | Fines to legal persons | X | X | X | X | X |
| | Restriction or stop the operation or facility | X | X | | X | X |
| Measures | Measures to remedy shortcomings | X | X | X | X | X |
| | Dealing with old environmental burdens | | X | | | |
| | Documenting the accidents and cooperation on their solving | X | X | X | | |
| | Confiscation of rare species | | | | | |
| | Confiscation of animals and goods | X | | | X | |
| Fees | Fees for emissions (waste water discharge, underground water use) | | X | | | |
| Statements | Statements and expert opinions for other state authorities | X | X | X | X | X |
| Suggestions | Dealing with suggestions | X | X | X | X | X |

CZ Environmental Inspectorate 2016

| | |
|---------------|--------------------------------------|
| 539 | employees – 395 inspectors |
| 10 | regional departments |
| 15 883 | controls |
| 40 | average controls per one inspector |
| 10 260 | issues decisions |
| 7 999 | expert opinions and statements (EIA) |



Inspections: Water protection

- 1 water protection – Water Act
- 2 prevention of major industrial accidents
- 3 integrated prevention and pollution control

Inspections in 2016:

| | |
|----------------|-------------------------------|
| 3 539 | controls related to the water |
| 580 | decisions on sanctions |
| 846 000 | euro total sum of fines |

Small hydro power plants

2014: In Czech Republic 1,572 small hydro power plants up to 1 MW installed power

2017: Environmental inspectorate controls

- the inspectorate controlled 99 small HPP
- main focus: minimal residual flow
- 13 HPP (13 %): violation of the Water Act
- 6 administrative procedures started
- Total fines: 10,000 euro (from 400 up to 3,000)

2016: violations in 18 % of the cases. The inspections help to improve the situation.

Small HPP controls 2015-2017

| Year | Controls of HPP | Administrative procedures started | Fines EUR (finally decided) |
|------|-----------------|-----------------------------------|-----------------------------|
| 2015 | 146 | 31 | 25,500 |
| 2016 | 93 | 15 | 5,600 |
| 2017 | 99 | 13 | 1,200 |

In 2017, total 15 cases of the violations were reported by the citizens (Dry Dams Project).

Dry Dams Project

V databázi je uvedeno

41 jezů

Suché jezy.cz

Přidat jez



Hledat ...



Databáze jezů, u kterých má výroba energie nepřiměřený negativní dopad na ekologii a rekreační využití.

O PROJEKTU SUCHÝCH JEZŮ



Databáze zahrnuje jezy, které:

- › nedodržují minimální zůstatkový průtok (MZP) a tím porušují zákon
- › dodržují MZP i veškeré zákony, ale MZP je obvykle historicky nastaven tak nízko, že není umožněna rekreační ani ekologická funkce řeky



Cíle projektu:

- › dodržování minimálních zůstatkových průtoků
- › zachování vodáckých tras pro rekreační a sportovní vodáctví
- › rozbor vlivu suchých jezů na ekologii, vodáctví a rybářství



VÝBĚR JEZU

Povodí:

--Vyberte--

Řeka:

--Vyberte--

Město:

--Vyberte--

Název jezu:

--Vyberte--

INFORMACE

- › [Proč jsou jezy suché](#)
- › [Historie vodního práva](#)

ÚVODEM

ŘEKA BEROUNKA, ŘIČNÍ KM 21,6, POVODÍ VLTAVY

[Opravit údaje o suchém jezu](#)

NÁZEV JEZU:

POLOHA JEZU:

49°55'13.697"N, 14°12'18.554"E

NEJBLIŽŠÍ MĚSTO:

Zadní Třebáň

POPIS JEZU:

Šikmý jez s propustí u pravé strany. Náhon odbočuje do elektrárny a vrací vodu až po 700 m. Pod jezem je zcela sucho cca 200 m.

DATUM SUCHÉHO JEZU:

| Datum | Orientační průtok |
|-----------|---|
| 18.7.2015 | vodočet Beroun, stav: 75 cm, 9.5 m ³ /s |
| 7.8.2015 | vodočet Beroun, stav: 63 cm, 5.04 m ³ /s |

[Přidat další den](#)

PŘENÁŠENÍ JEZU:



Example: Dry dam



Example: Dry dam

Effective environmental inspection

- 1 Covering the whole territory of the country
- 2 Covering all components of the environment
- 3 Regional departments (close distance to travel)
- 4 Sufficient personal capacity
- 5 Plan of controls & ability to react on complaints
- 6 Relevant competence to deal with the issues
- 7 Appropriate fines mechanism

Transparency and accountability:

- Public annual reports with detail statistics and description of the most relevant cases
- Obligation to respond to written request on information

Dry rivers and minimal flow

- **There is a need to establish regulation on minimal residual flow in BiH**
- **Who will monitor compliance with the regulation and what will be the capacity and power to punish its violations?**

Thank you for your attention!

Martin Skalský

martin.skalsky@arnika.org

Arnika – Citizens Support Centre

Delnicka 13, 170 000 Prague 7

The Czech Republic

More information:

HR/BH/SR: <http://eko.ba>

English: <http://english.arnika.org/bosnia-and-herzegovina>



ARNIKA



TRANSITION

Ministry of Foreign Affairs of the Czech Republic